

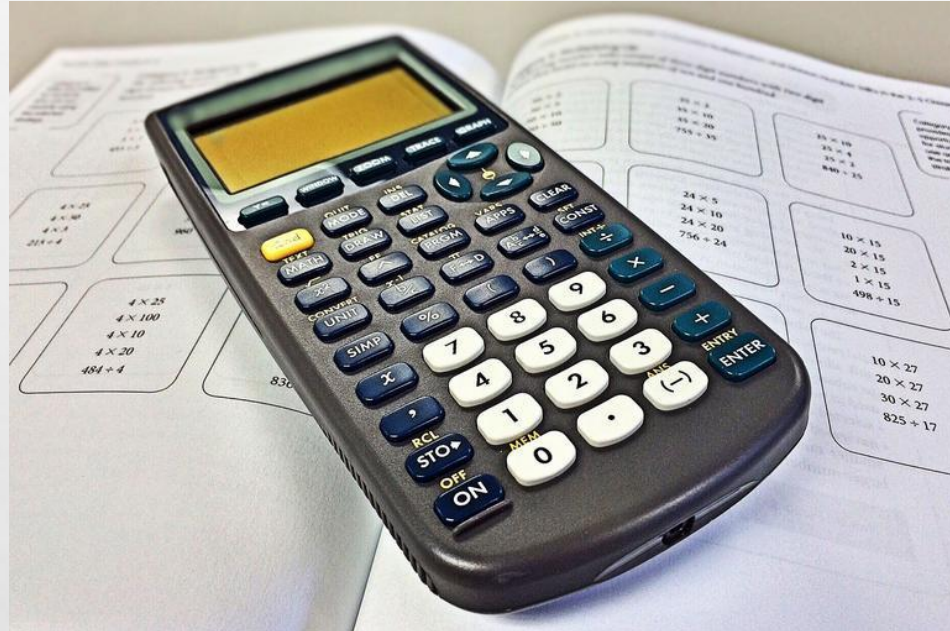
MATHEMATICS

IN DONABATE COMMUNITY COLLEGE



WHEN?

EVERY DAY

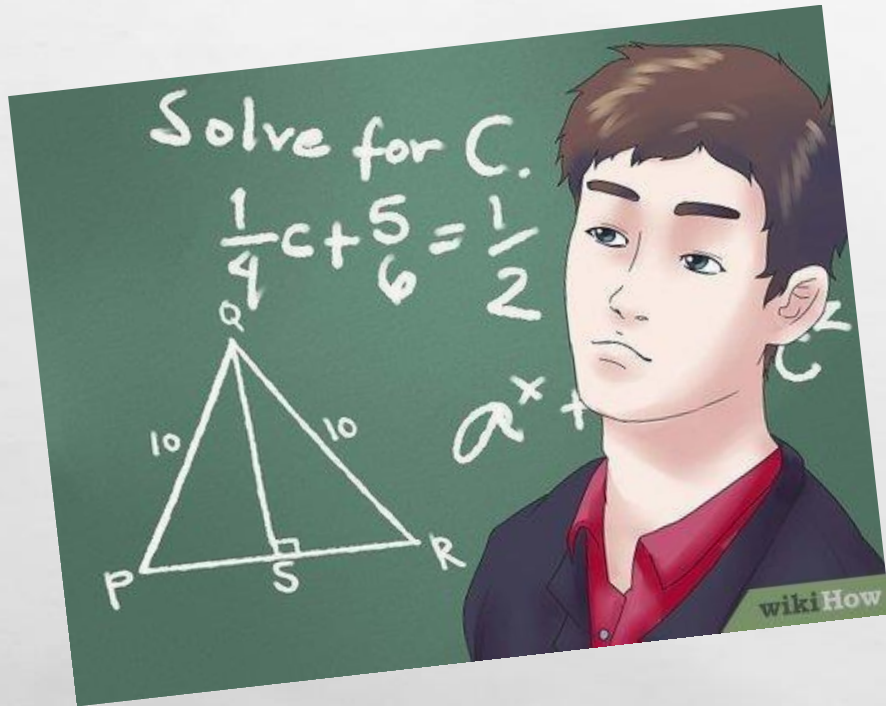


COMMON LEVEL – 1ST YEAR

- **WE REVISE THE KEY COMPONENTS OF NUMERACY SO YOU CAN DO MATHS IN ALL OF YOUR OTHER SUBJECTS**



PROBLEM SOLVING



- **OUR 1ST TOPIC IS PROBLEM SOLVING**
- **WE WILL TEACH YOU TO 'THINK OUTSIDE OF THE BOX'**

INVESTIGATIONS

- **WE WILL TEACH YOU HOW TO WIN
AT GAMES, HOW TO USE YOUR LOGIC
AND TO CHOOSE THE RIGHT
ANSWERS**



PUZZLES

CAN YOU SOLVE THIS?

$$\text{Pink Candy} \times \text{Pink Candy} \times \text{Orange Candy} = 16$$

$$\text{Blue Candy} \times \text{Blue Candy} \times \text{Blue Candy} = 27$$

$$2 \times \text{Blue Candy} \times \text{Orange Candy} = 12$$

$$\text{Orange Candy} + \text{Pink Candy} \times \text{Blue Candy} = ?$$