

Wellbeing Policy

DONABATE COMMUNITY COLLEGE



This Policy is to be reviewed by the Board of Management every three years.

This Policy was agreed on:

25/3/2025

Signature:



(Chairperson to the Board of Management)

Donabate Community College

Donabate Community College is a post primary college, which opened in August 2008 under the Patronage of Dublin and Dun Laoghaire Education and Training Board (DDLETB). The college is co-educational and aspires towards excellence in a caring and supportive environment.

The Board of Management is committed to the successful implementation of recent legislation, in particular the Education Act (1998), the Education (Welfare) Act (2000) and the Equal Status Act (2000). The Board fully subscribes to the principles of partnership, accountability, transparency, inclusion and respect for diversity, parental choice and equality.

College Mission

The Board of Management will promote Excellence. Our aim will be to create, with the assistance of parents/guardians, responsible citizens with pride in their community. The development of the whole person will be based on personal responsibility, inter dependence, respect for people and respect for property. Our college will seek to instill integrity, value discipline and punctuality and facilitate the best in academic and non-academic areas. We will value our culture, our tradition, be inclusive of religious beliefs and will seek to be a caring and compassionate community where justice and truth will be the central elements.

Policy Review and Ratification

Donabate Community College is committed to ongoing policy review to ensure clarity, relevance, and compliance with current legislation and best practices. Where amendments to a policy are of a minor or administrative nature and do not alter its overall meaning, purpose, or intent, the school may proceed to seek ratification from the Board of Management without further consultation with stakeholders. However, where substantive changes are proposed that impact the policy's intent, scope, or application, appropriate consultation with relevant stakeholders will be undertaken before submission to the Board of Management for ratification.

Rationale

In light of our mission statement core values, the school is clear that wellbeing must include a mental, physical and social dimension. The emphasis of this policy is on the role of the whole school community in the wellbeing programme.

This is a whole school policy and other school policies will be informed by it. Policies informed by:

- Positive Behaviour Policy
- Homework Policy
- SPHE Policy
- AUP/Internet Safety Policy
- Anti-bullying Policy
- Dignity in the Workplace Policy
- Child Protection Policy
- Critical Incident Policy
- Mobile phone policy

Whole-School Approach

Wellbeing has always been central to our vision for Donabate Community College. As part of this process all stakeholders have been consulted.

A wellbeing committee is set up in September of each academic period. Its purpose is to develop wellbeing in our school and to improve communications with all stakeholders about wellbeing.

Aims

Donabate Community College endeavours to develop and support wellbeing in our school. It aims to:

- Provide for the wellbeing for all in the school in light of the school Mission Statement
- Outline the policies, procedures, culture and the activities which serve to assist the wellbeing of everyone at Donabate Community College
- Recognise the interplay between the positive experience of school life, student achievement and long-term wellbeing.
- Offer a coordinated structure in supporting our young people through the creation of a multiplicity of opportunities both within and without the classroom focused on the promotion of wellbeing

Donabate Community College hopes that both students and staff:

- Realise their abilities
- Take care of their physical wellbeing
- Cope with normal stresses
- Have a sense of purpose
- Have a sense of belonging

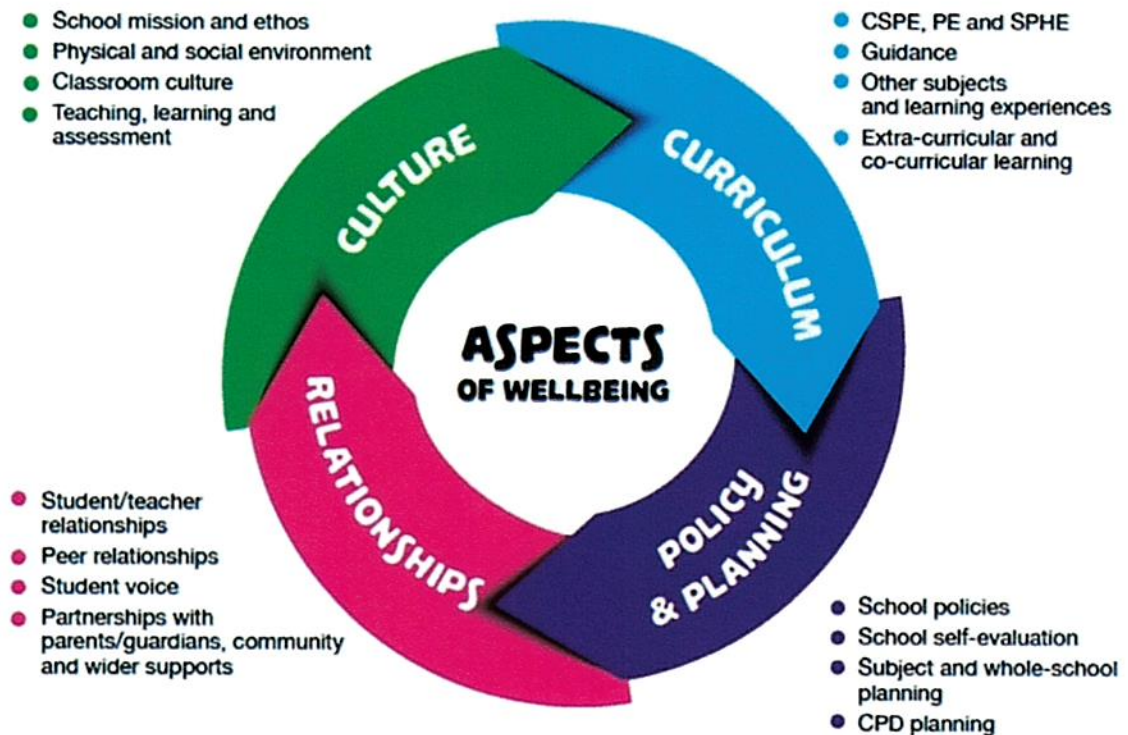
Wellbeing Curriculum

- It will make the school's culture, ethos and commitment to wellbeing visible to students.
- It will enable students to build life skills and develop a strong sense of connectedness to their school and to their community.
- Schools have a central role to play in supporting and promoting students' learning about wellbeing and for wellbeing, in the classroom and all school activities.
- The indicators of wellbeing are incorporated into subject plans.



Aspects of Wellbeing

When looking at wellbeing, Donabate Community College takes into account the four aspects of wellbeing:



LAOS (Looking at Our Schools) & Wellbeing

- Holistic view of learning – broad, balanced, challenging, responsive to learners’ needs.
- Students well-being as intrinsic to this holistic view of learning, both as an outcome of learning and as an enabler of learning.
- It recognises the crucial role of schools in promoting and nurturing students well-being through their practices in the key areas of school environment, curriculum, policies and partnerships.

SSE & Wellbeing

Schools are required to have a wellbeing focus for their School Self-Evaluation process until June 2026. In Donabate Community College our focus until June 2026 is: **To cultivate a school culture that fosters a sense of belonging, inclusion, promotes well-being and empowers student voices.**

The process of developing the wellbeing programme follows the six-step procedure outlined in the School Self Evaluation guidelines.

Each of the four aspects of wellbeing has been considered in the development of this policy and the feedback and information gained will be incorporated into our wellbeing programme

The wellbeing committee will monitor actions taken to date and will review the process each year

Staff Wellbeing:

- Donabate Community College has made significant progress in the promotion of wellbeing not only for students but also for school staff.
- The staff wellbeing committee organise and highlight many events and activities, which have been organised by members of staff.
- These events include social, physical and health related activities. Please see Wellbeing folder for further information relating to the wellbeing process in Donabate Community College.